

VETERINARY
Imaging Solution



JPI Healthcare Co., Ltd.

608-ho, 28, Digital-ro 33-gil, Guro-gu, 08377, Seoul, Korea

global@jpi.co.kr



Copyright (c) JPI Healthcare Co., Ltd. All Rights Reserved.



www.jpi-korea.com

Innovative Leader
in X-ray Imaging Solution



VETERINARY
Imaging Solution



DynaVue
DUO
Innovative Solution for Digital VET System



Powerful 2-in-1 Solution
Digital Real-Time Fluoroscopy
with **Large FoV**

www.dynavue-info.com

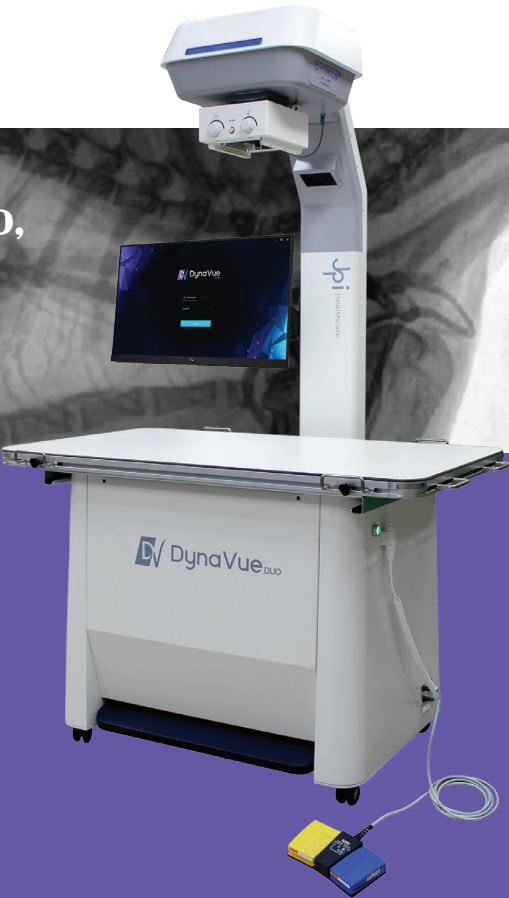




Experience more with DynaVue Duo,
from Complex Fluoroscopy
to Standard Radiography.

- Minimally Invasive Fracture Repair
- Intraluminal Stenting for the Treatment of Tracheal Collapse
- Urethral and Colonic Obstructive Disease
- Vascular Procedures
- Orthopedic Procedures
- Contrast Studies of the Gastrointestinal Tract

And Many More . . . www.dynavue-info.com



Space Efficient and Easy to Install

DynaVue Duo does not require an expensive electrical work since it runs with standard 220V wall socket and its compact design makes it ideal for clinics with limited space.

Highlight Features



Efficient
Powerful
Monoblock



User Friendly
Intuitive S/W



Large FOV
17 x 17
Imaging Area



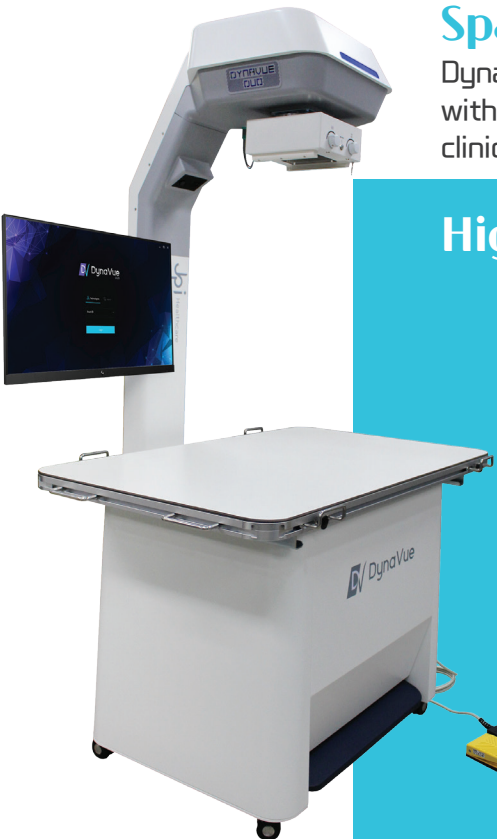
Convenience
4-Way
Floating Table



Smart
Intelligent Self
Fault Detection



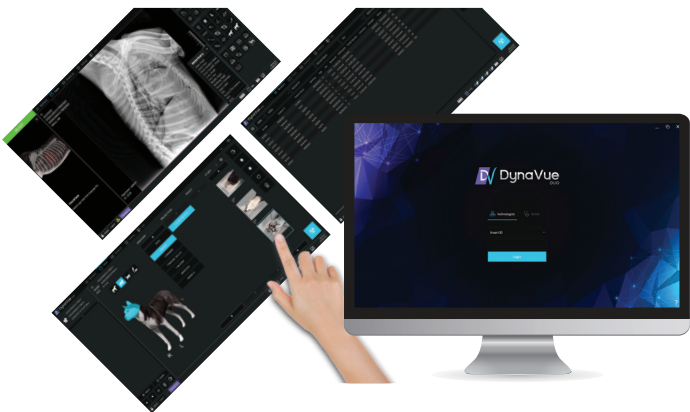
Automatic
Voltage
Regulator



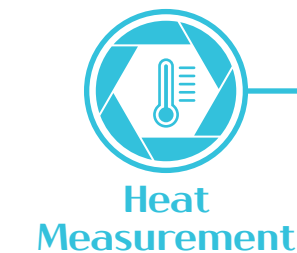
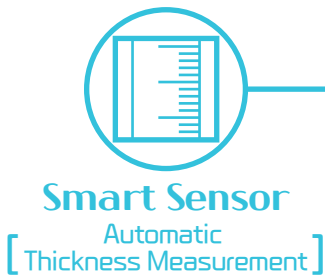
Easy-to-use software with ultra-fast acquisition time will improve the workflow efficiency of the clinic.

Generator and dynamic flat panel detector implemented in DynaVue Duo are fully integrated with ExamVue Duo S/W, ensuring the maximum efficiency of workflow and productivity. Its users will be able to provide the highest level of services to clients.

DynaVue Duo Software



DynaVue Duo was designed to make sure its users only experience efficiency, flawless workflow, and generate additional value for services rendered. Smart features, such as automatic thickness measurement, heat measurement, and video cameras, were added for such purposes. DynaVue Duo is equipped with wide range measurement and analysis tools and positioning guide to help its users to offer best service possible to their clients.



Customer Service

Our outstanding customer support team is consisted of engineers with experience and knowledge. Also, we supply remote training session for our valued partners so they may enhance their understanding and supply the best service possible to end users.

